



# VANDEBORD TROLLEY DATA SHEET

# REFURBISHED

# VANDEBORD

## AN INDIVIDUAL DESIGN WILL MAKE YOUR VANDEBORD AIRLINE TROLLEY UNIQUE. THIS INFORMATION WILL HELP YOU CREATE THE IDEAL PRINT FILE.

### DOWNLOAD PRINT TEMPLATES



You can find print templates directly on the product detail page for quality assets.

**Please delete the template again before you export the print data, otherwise it will also be printed!**

Link: [www.vandebord.de/en/airplane-trolley-your-design-refurbished](http://www.vandebord.de/en/airplane-trolley-your-design-refurbished)

### FILE FORMATS

JPEG image files or PDF files are suitable. The file must be created in CMYK colour mode. For perfect results, the resolution in the print format must be 300 dpi. Please refer to the information on **quality**.

### DATA FORMAT

(Format / size of the document page)

You need to create **one** print file for the four sides of the trolley. Please observe the sequence Front/Right/Back/Left. For precise dimensions, please refer to the diagram below.

### QUALITY

VanDeBord prints every motif with a high resolution. Image reproduction depends exclusively on the delivered file.

### BLEED DIFFERENCE

(Area of the trolley sides that is omitted during further processing)

Please include the following bleeds:

right and left = 15 mm each

top and bottom = 20 mm each

Note that certain areas of the image will disappear when the printout is mounted. They are marked dark blue in the PDF.

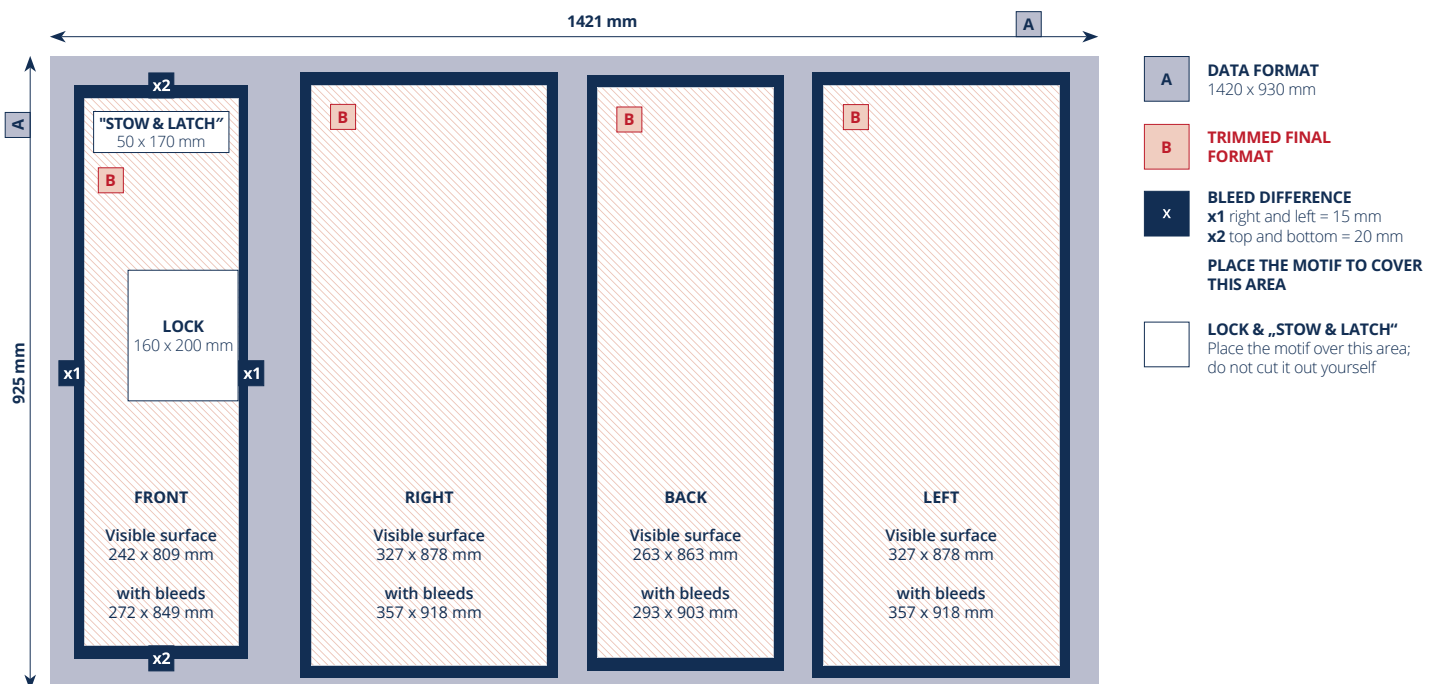
Place your image motif to fully cover this area in order to avoid white borders.

Please make sure that this area does not contain any important image elements. A layout template for professionals is available.

### MAILING PRINT FILES

Please send the print files by e-mail to [pilot@vandebord.com](mailto:pilot@vandebord.com)

Be sure to include your order number. Your individual design will make your VanDeBord airline trolley unique.



Drawing not to scale